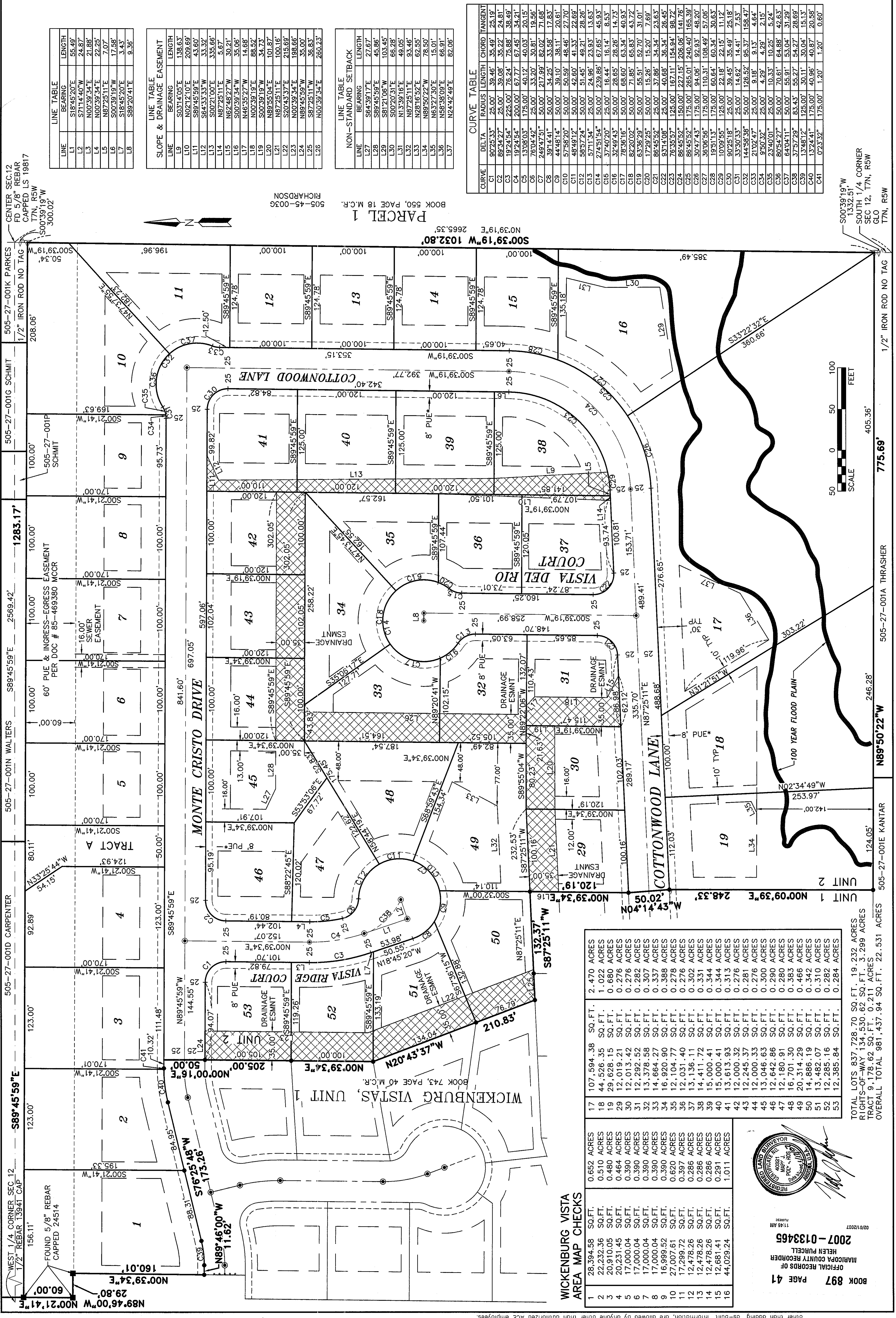


WICKENBURG VISTAS UNIT 2
 WICKENBURG, ARIZONA
FINAL PLAT

ASPEN CREEK ENGINEERING, INC.
 1011 COMMERCE DRIVE, SUITE G
 PRESCOTT, AZ 86305
 (928) 445-1164 OFFICE (928) 445-0842 FAX

JDM BUSINESS VENTURES, LLC
 ATTN: JOSEPH D. MONACO
 20600 W. AIRPARK DRIVE
 WICKENBURG, AZ 85390
 602.803.0689

NO.	DATE	DESCRIPTION
1		



CENTER SEC. 12
 FD 5/8" REBAR
 CAPPED LS 19817
 T7N, R5W
 S00°39'19"W
 300.02'

LINE TABLE

LINE	BEARING	LENGTH
L1	S18°45'20"E	55.49'
L2	S71°14'40"W	24.87'
L3	N00°39'34"E	21.88'
L4	N00°39'34"E	22.25'
L5	N87°25'11"E	7.07'
L6	S00°39'19"W	17.58'
L7	S18°45'20"E	3.43'
L8	S89°20'41"E	9.36'

LINE TABLE
 SLOPE & DRAINAGE EASEMENT

LINE	BEARING	LENGTH
L9	S03°14'05"E	138.63'
L10	N02°12'10"E	209.69'
L11	S89°45'59"E	43.60'
L12	S64°33'33"W	33.32'
L13	S00°21'00"E	335.66'
L14	N87°25'11"E	5.67'
L15	N62°48'27"W	30.21'
L16	S00°39'34"W	35.06'
L17	N46°35'27"W	14.68'
L18	N00°39'19"W	88.52'
L19	S00°39'19"W	34.73'
L20	N89°55'04"E	101.67'
L21	N87°25'11"E	100.16'
L22	S20°43'37"E	215.69'
L23	N00°39'34"E	198.66'
L24	N89°45'59"E	35.00'
L25	S87°25'11"W	36.83'
L26	N00°39'34"E	260.23'

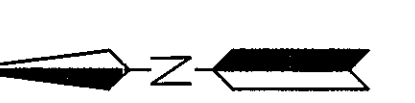
LINE TABLE
 NON-STANDARD SETBACK

LINE	BEARING	LENGTH
L27	S64°39'17"E	27.67'
L28	S89°45'59"E	45.96'
L29	S81°21'06"W	103.45'
L30	S02°03'31"E	66.28'
L31	N15°39'16"E	49.05'
L32	N87°25'11"E	93.48'
L33	N28°16'52"E	62.55'
L34	N89°50'22"W	78.50'
L35	N63°27'30"E	15.01'
L36	N58°38'09"E	66.91'
L37	N24°42'49"E	82.06'

CURVE TABLE

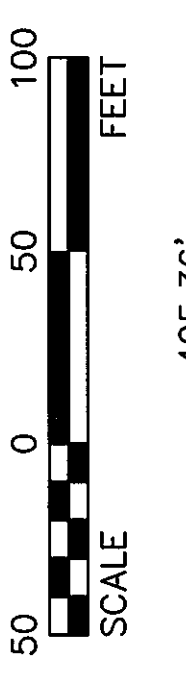
CURVE	DELTA	RADIUS	LENGTH	CHORD	TANGENT
C1	80°25'33"	25.00'	39.46'	35.46'	25.18'
C2	89°34'22"	25.00'	39.08'	35.22'	24.81'
C3	19°24'54"	225.00'	76.24'	75.88'	36.49'
C4	19°24'54"	200.00'	67.77'	67.45'	34.21'
C5	13°08'03"	175.00'	40.17'	40.03'	20.15'
C6	76°04'42"	25.00'	33.20'	30.81'	19.56'
C7	249°47'51"	50.00'	217.99'	82.02'	71.68'
C8	39°14'41"	50.00'	34.25'	33.55'	17.83'
C9	44°48'14"	50.00'	39.10'	38.11'	20.61'
C10	57°58'20"	50.00'	50.59'	48.46'	27.70'
C11	48°49'12"	50.00'	42.60'	41.33'	22.69'
C12	58°57'24"	50.00'	51.45'	49.21'	28.26'
C13	57°11'34"	25.00'	24.96'	23.93'	13.63'
C14	274°51'54"	50.00'	239.86'	67.65'	45.93'
C15	37°40'20"	25.00'	16.44'	16.14'	8.53'
C16	32°49'43"	50.00'	28.65'	28.26'	14.73'
C17	78°36'16"	50.00'	66.60'	63.94'	40.93'
C18	82°20'02"	50.00'	71.85'	68.83'	43.72'
C19	63°36'29"	50.00'	55.51'	52.70'	31.01'
C20	17°29'25"	50.00'	15.26'	15.20'	7.69'
C21	86°45'52"	25.00'	37.86'	34.54'	23.63'
C22	93°14'08"	25.00'	40.68'	36.34'	26.45'
C23	76°35'57"	125.00'	167.11'	154.94'	98.72'
C24	86°45'52"	150.00'	227.15'	206.06'	141.76'
C25	86°45'52"	175.00'	265.01'	240.40'	166.39'
C26	30°47'43"	175.00'	94.06'	92.93'	48.20'
C27	36°06'56"	175.00'	110.31'	108.49'	57.06'
C28	19°51'13"	175.00'	60.64'	60.34'	30.63'
C29	10°09'55"	125.00'	22.18'	22.15'	11.12'
C30	90°25'18"	25.00'	39.45'	35.49'	25.18'
C31	33°30'33"	25.00'	14.62'	14.41'	7.53'
C32	144°59'38"	50.00'	126.52'	95.37'	158.47'
C33	21°02'47"	25.00'	9.18'	9.13'	4.64'
C34	9°50'32"	25.00'	4.29'	4.29'	2.15'
C35	23°40'01"	25.00'	10.33'	10.25'	5.24'
C36	80°54'27"	50.00'	70.61'	64.88'	42.63'
C37	64°04'11"	50.00'	55.91'	53.04'	31.29'
C38	37°57'29"	83.43'	55.27'	54.27'	28.69'
C39	13°48'12"	125.00'	30.11'	30.04'	15.13'
C40	13°24'41"	175.00'	40.96'	40.87'	20.58'
C41	0°23'32"	175.00'	1.20'	1.20'	0.60'

505-45-0036
 RICHARDSON



BOOK 550, PAGE 18 M.C.R.
PARCEL 1
 N03°39'19"E 2665.35'
 S00°39'19"W 1032.80'

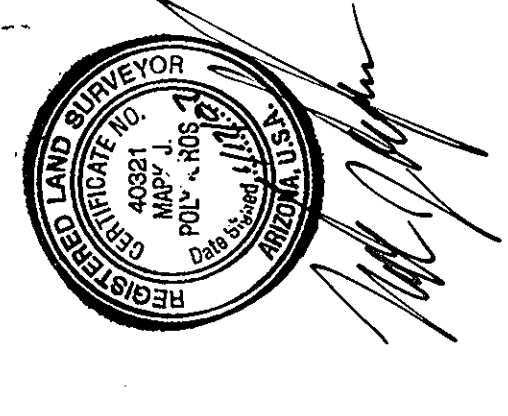
S00°39'19"W 1332.51'
 SOUTH 1/4 CORNER
 SEC 12, T7N, R5W
 GLO
 T7N, R5W



SCALE
 405.36'
775.69'

WICKENBURG VISTA AREA MAP CHECKS

1	28,394.58	SQ.FT.	0.652	ACRES
2	22,232.36	SQ.FT.	0.510	ACRES
3	20,910.05	SQ.FT.	0.480	ACRES
4	20,231.45	SQ.FT.	0.464	ACRES
5	17,000.04	SQ.FT.	0.390	ACRES
6	17,000.04	SQ.FT.	0.390	ACRES
7	17,000.04	SQ.FT.	0.390	ACRES
8	17,000.04	SQ.FT.	0.390	ACRES
9	16,999.52	SQ.FT.	0.390	ACRES
10	27,007.61	SQ.FT.	0.620	ACRES
11	17,299.72	SQ.FT.	0.397	ACRES
12	12,478.26	SQ.FT.	0.286	ACRES
13	12,478.26	SQ.FT.	0.286	ACRES
14	12,478.26	SQ.FT.	0.286	ACRES
15	12,681.41	SQ.FT.	0.291	ACRES
16	44,029.24	SQ.FT.	1.011	ACRES
17	107,594.38	SQ.FT.	2.470	ACRES
18	44,526.35	SQ.FT.	1.022	ACRES
19	29,628.15	SQ.FT.	0.680	ACRES
20	12,019.21	SQ.FT.	0.276	ACRES
30	12,013.42	SQ.FT.	0.276	ACRES
31	12,292.52	SQ.FT.	0.282	ACRES
32	13,378.58	SQ.FT.	0.307	ACRES
33	14,664.27	SQ.FT.	0.337	ACRES
34	16,920.90	SQ.FT.	0.388	ACRES
35	12,104.77	SQ.FT.	0.278	ACRES
36	12,031.40	SQ.FT.	0.276	ACRES
37	13,136.11	SQ.FT.	0.302	ACRES
38	14,411.72	SQ.FT.	0.331	ACRES
39	15,000.41	SQ.FT.	0.344	ACRES
40	15,000.41	SQ.FT.	0.344	ACRES
41	13,613.93	SQ.FT.	0.313	ACRES
42	12,000.32	SQ.FT.	0.276	ACRES
43	12,245.37	SQ.FT.	0.281	ACRES
44	12,000.33	SQ.FT.	0.276	ACRES
45	13,046.63	SQ.FT.	0.300	ACRES
46	12,642.86	SQ.FT.	0.290	ACRES
47	12,180.91	SQ.FT.	0.280	ACRES
48	16,701.30	SQ.FT.	0.383	ACRES
49	20,314.29	SQ.FT.	0.466	ACRES
50	14,886.19	SQ.FT.	0.342	ACRES
51	13,482.07	SQ.FT.	0.310	ACRES
52	12,285.16	SQ.FT.	0.282	ACRES
53	12,385.84	SQ.FT.	0.284	ACRES



BOOK 897 PAGE 41
 OFFICIAL RECORD OF
 MARICOPA COUNTY RECORDER
 HELEN PURCELL
 2007-0133465
 02/01/2007

© Copyright, ACE 2005 - This plan document set is the sole property of ACE. No alterations or use are allowed by anyone other than authorized ACE employees. Other than adding "as-built" information, no other information is to be added to this plan.